

12 October 2010

## PRESS RELEASE

### EURO AREA SECURITIES ISSUES STATISTICS: AUGUST 2010

*The annual growth rate of the outstanding amount of debt securities issued by euro area residents increased from 3.3% in July 2010 to 3.7% in August. For the outstanding amount of quoted shares issued by euro area residents, the annual growth rate was 1.7% in August 2010, the same as in July.*

New issuance of debt securities by euro area residents totalled EUR 911 billion in August 2010 (see Table I and Chart 1). Redemptions came to EUR 829 billion and net issues amounted to EUR 85 billion (see Table 1).<sup>1</sup> The annual growth rate of outstanding debt securities issued by euro area residents increased from 3.3% in July 2010 to 3.7% in August (see Table I and Chart 3).

As regards the sectoral breakdown, the annual growth rate of outstanding debt securities issued by non-financial corporations was 10.3% in August 2010, compared with 10.2% in July (see Table 2 and Chart 4). For the monetary financial institutions (MFIs) sector, this growth rate was -0.3% in August 2010, compared with -0.9% in July. The annual growth rate of outstanding debt securities issued by financial corporations other than MFIs increased from 0.3% in July 2010 to 1.5% in August. For the general government, this growth rate decreased from 7.9% in July 2010 to 7.7% in August.

As regards the maturity breakdown, the annual growth rate of outstanding short-term debt securities was -4.6% in August 2010, compared with -8.2% in July (see Table I and Chart 3). The annual growth rate of outstanding short-term debt securities issued by MFIs was -0.5% in August 2010, compared with -7.6% in July (see Table 2). For long-term debt securities, the annual growth rate was 4.7% in August 2010, compared with 4.8% in July (see Table 1). The annual growth rate of outstanding long-term debt securities issued by MFIs decreased from 0.2% in July 2010 to -0.3% in August (see Table 2). The annual growth rate of outstanding fixed rate long-term debt securities decreased from 7.7% in July 2010 to 7.5% in August (see Table 1). The annual growth rate of outstanding variable rate long-term debt securities was -0.9% in August 2010, compared with -1.3% in July.

Concerning the currency breakdown, the annual growth rate of outstanding euro-denominated debt securities increased from 3.4% in July 2010 to 3.7% in August. For debt securities in other currencies, this growth rate increased from 2.3% in July 2010 to 3.8% in August (see Table 1).

---

<sup>1</sup> As a full breakdown of net issues into gross issues and redemptions may not always be available, the difference between aggregated gross issues and redemptions may deviate from the aggregated net issues.

The seasonally adjusted three-month annualised growth rate of outstanding debt securities issued by euro area residents increased from 1.2% in July 2010 to 5.5% in August (see Table 3 and Chart 5).

New issuance of quoted shares by euro area residents totalled EUR 1.7 billion in August 2010 (see Table 4). Redemptions came to EUR 1.2 billion and net issues amounted to EUR 0.6 billion. The annual growth rate of the outstanding amount of quoted shares issued by euro area residents (excluding valuation changes) was 1.7% in August 2010, the same as in July (see Table 4 and Chart 6). The annual growth rate of quoted shares issued by non-financial corporations was 1.0% in August 2010, compared with 0.9% in July. For monetary financial institutions, the corresponding growth rate was 5.1% in August 2010, the same as in July. For financial corporations other than MFIs, this growth rate decreased from 4.5% in July 2010 to 4.1% in August.

The outstanding amount of quoted shares issued by euro area residents totalled EUR 4,119 billion at the end of August 2010. Compared with EUR 4,044 billion at the end of August 2009, this represents an annual increase of 1.9% in the value of the stock of quoted shares in August 2010, down from 10.6% in July.

*Unless otherwise indicated, data relate to non-seasonally adjusted statistics. In addition to the developments for August 2010, this press release incorporates minor revisions to the data for previous periods. As of the reference periods December 2008 and December 2009, respectively, two euro area countries extended the coverage of debt securities issued to include also the non-MFI corporations and the short-term debt securities issued by the general government sector; the coverage of quoted shares has also been expanded to include also international listings. As the annual growth rates are based on financial transactions that occur when an institutional unit incurs or redeems liabilities, they are not affected by the impact of any other changes which do not arise from transactions.*

*A complete set of updated securities issues statistics is available on the "Monetary and financial statistics" pages of the "Statistics" section of the ECB's website (<http://www.ecb.europa.eu/stats/money/securities/html/index.en.html>). These data, as well as euro area data in accordance with the composition of the euro area at the time of the reference period, can be downloaded using the ECB's Statistical Data Warehouse (SDW).*

*Data for the period up to August 2010 will also be published in the November 2010 issues of the ECB's Monthly Bulletin and Statistics Pocket Book. The next press release on euro area securities issues will be published on 11 November 2010.*

**European Central Bank**

Directorate Communications, Press and Information Division

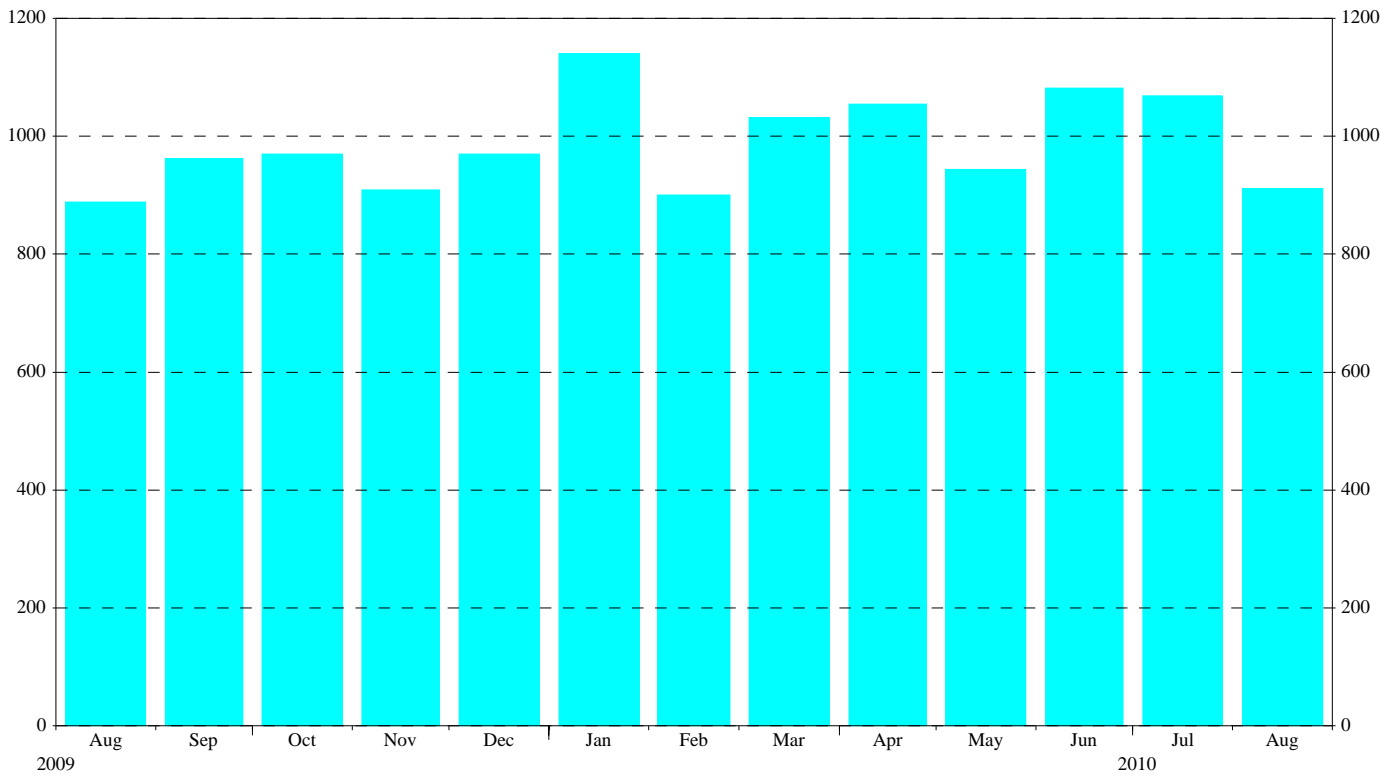
Kaiserstrasse 29, D-60311 Frankfurt am Main

Tel.: +49 69 1344 7455, Fax: +49 69 1344 7404

Internet: <http://www.ecb.europa.eu>

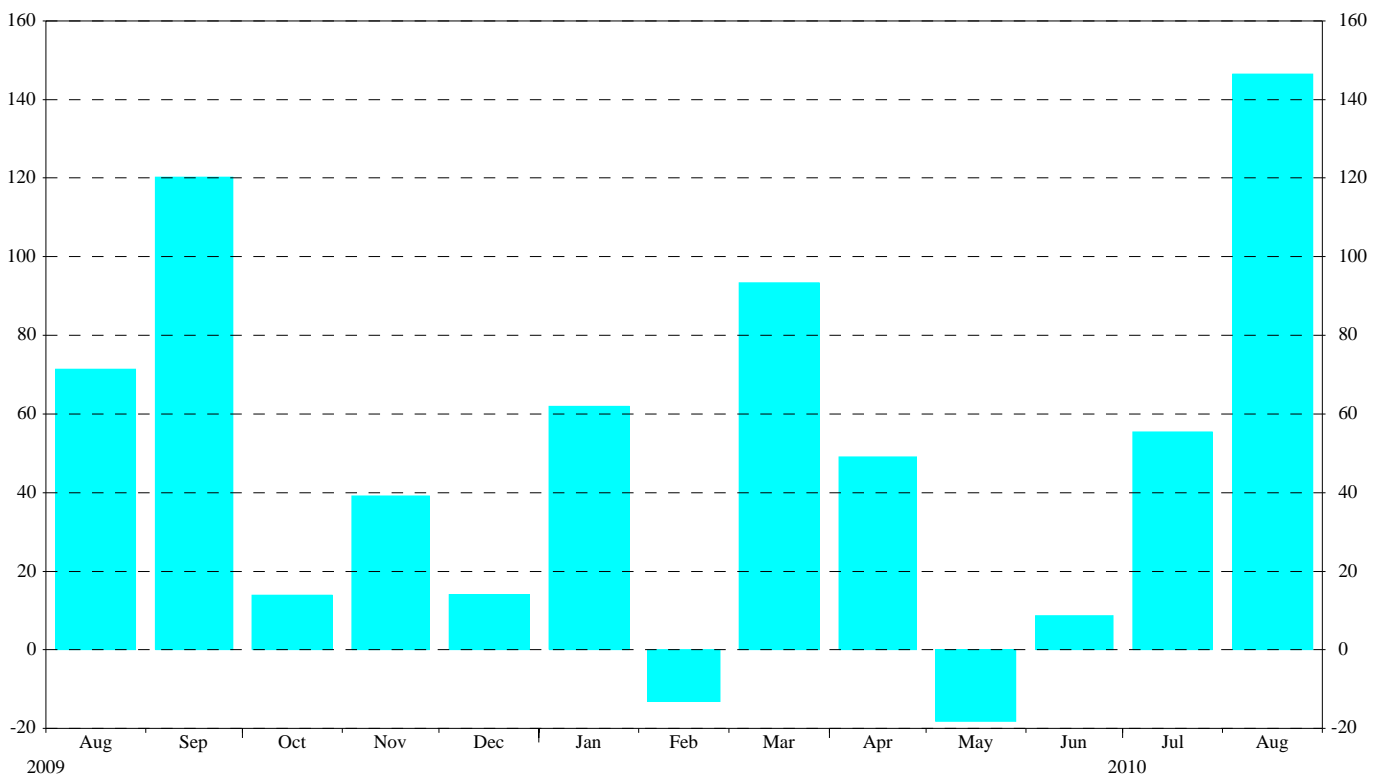
**Reproduction is permitted provided that the source is acknowledged.**

**Chart 1: Total gross issuance of debt securities by euro area residents**  
*(EUR billions; transactions during the month; nominal values)*



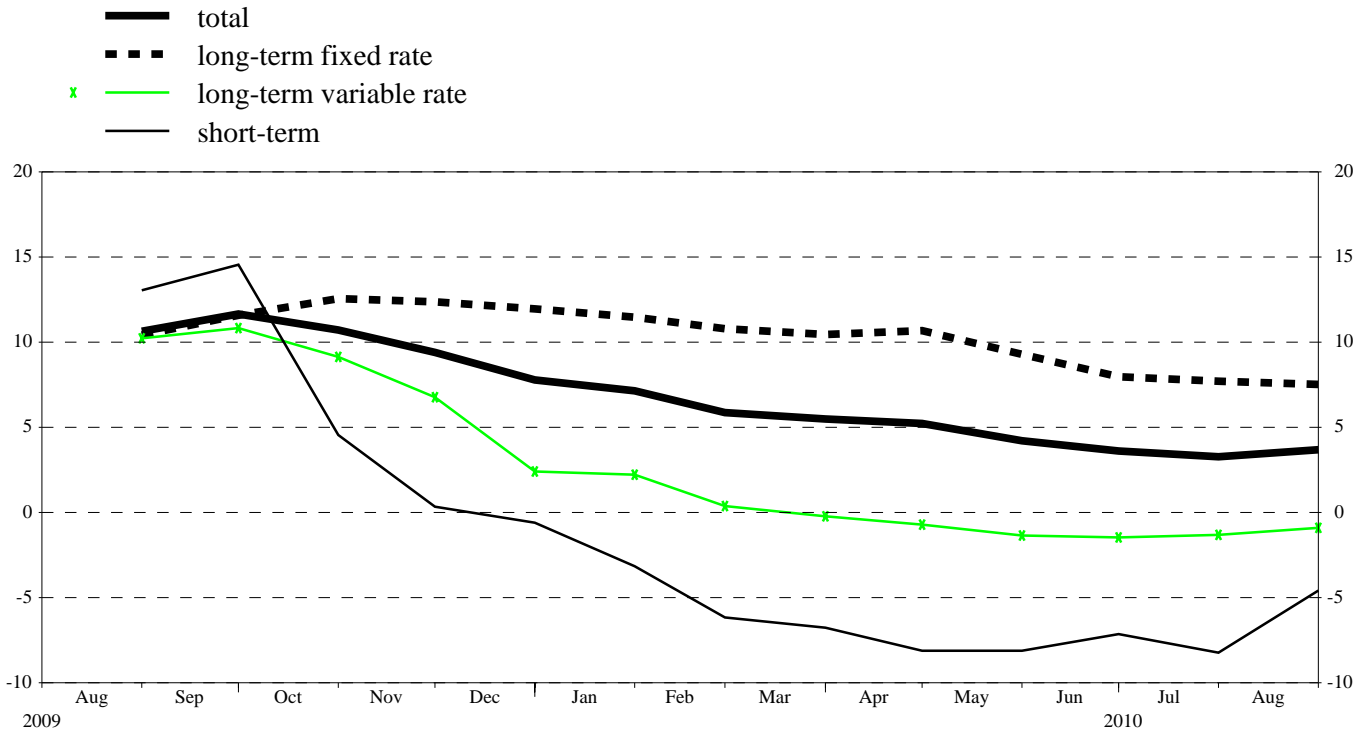
Source: ECB securities issues statistics.

**Chart 2: Total net issuance of debt securities by euro area residents**  
*(EUR billions; transactions during the month; nominal values; seasonally adjusted)*



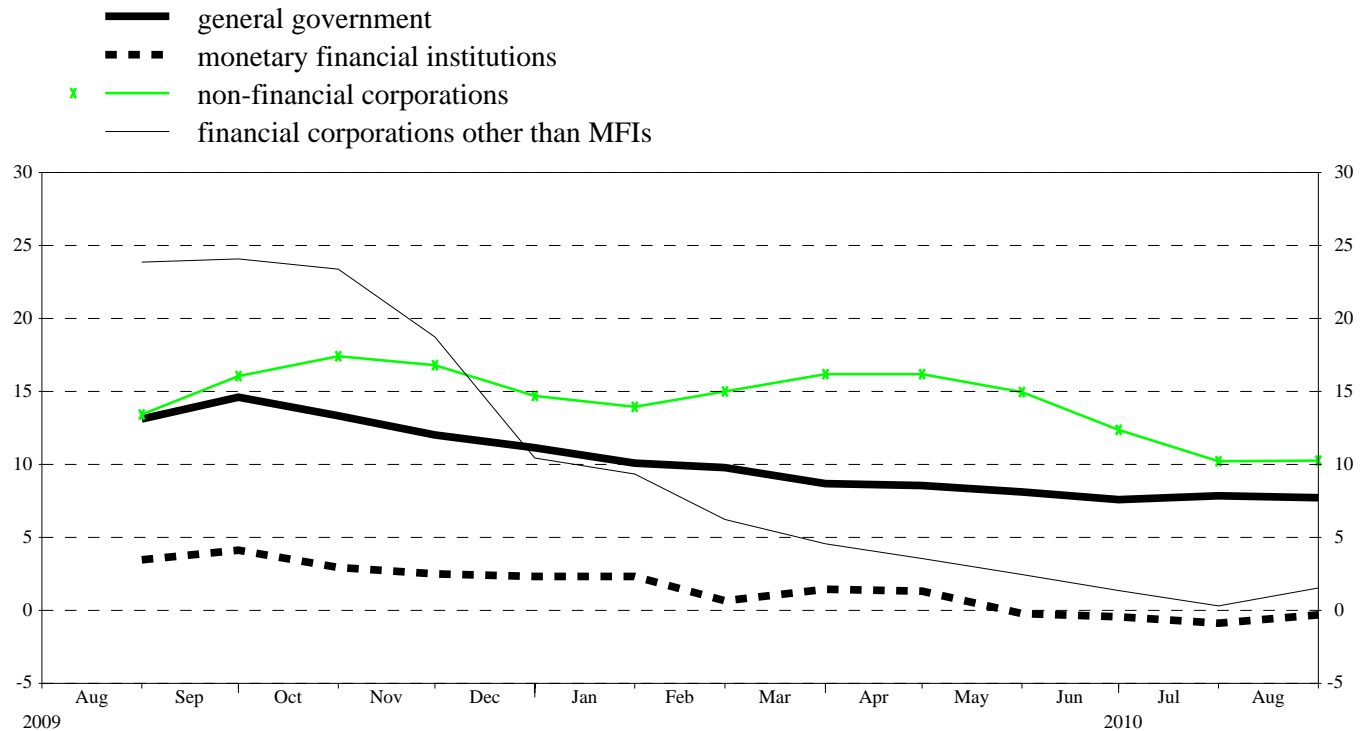
Source: ECB securities issues statistics.

**Chart 3: Annual growth rates of debt securities issued by euro area residents, by original maturity**  
(percentage changes)



Source: ECB securities issues statistics.

**Chart 4: Annual growth rates of debt securities issued by euro area residents, by sector**  
(percentage changes)



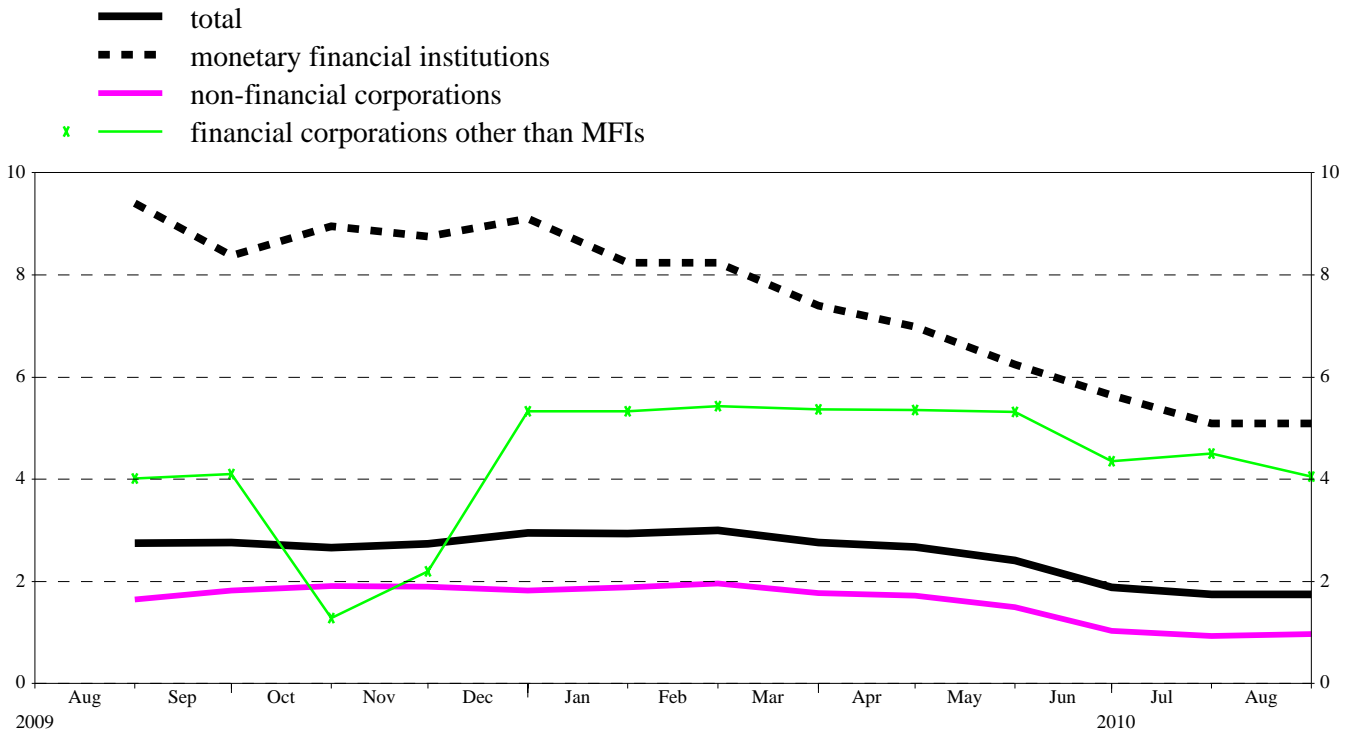
Source: ECB securities issues statistics.

**Chart 5: Growth rates of debt securities issued by euro area residents, seasonally adjusted**  
(percentage changes)



Source: ECB securities issues statistics.

**Chart 6: Annual growth rates of quoted shares issued by euro area residents, by sector**  
(percentage changes)



Source: ECB securities issues statistics.

**Table 1****Debt securities issued by euro area residents, by currency and original maturity <sup>1)</sup>***(EUR billions; nominal values)*

	Amounts outstanding	Net issues	Gross issues	Redemptions	Net issues <sup>3)</sup>	Amounts outstanding <sup>5)</sup>	Gross issues	Redemptions	Net issues <sup>3)</sup>	Amounts outstanding <sup>5)</sup>	Gross issues	Redemptions	Net issues <sup>3)</sup>	Annual growth rates of outstanding amounts <sup>6)</sup>											
														Aug. 2009	Sep. 2009 - Aug. 2010 <sup>4)</sup>			July 2010			Aug. 2010			2008	2009
	Total	14,354.2	19.9	995.1	950.5	45.8	15,690.2	1,068.5	1,044.2	22.9	15,802.6	911.0	829.4	84.8	7.6	10.9	11.2	9.9	6.5	4.7	5.5	5.2	4.2	3.6	3.3
of which in euro	12,969.5	27.6	901.0	860.1	41.2	13,956.9	967.2	920.1	47.6	14,024.7	803.9	736.5	68.3	8.0	11.8	12.3	10.6	6.5	4.5	5.5	5.1	3.9	3.5	3.4	3.7
in other currencies	1,384.7	-7.7	94.1	90.4	4.6	1,733.4	101.3	124.0	-24.7	1,777.9	107.1	92.9	16.5	4.1	3.0	2.2	4.4	6.6	6.0	5.2	6.2	6.7	4.7	2.3	3.8
Short-term	1,650.6	-27.5	765.7	772.3	-6.4	1,598.3	800.3	796.6	4.5	1,636.1	758.7	721.9	36.5	22.8	16.6	15.8	3.8	-4.3	-7.7	-6.7	-8.1	-8.1	-7.1	-8.2	-4.6
of which in euro	1,481.0	-15.9	696.4	704.1	-7.4	1,404.7	726.3	715.9	11.7	1,432.6	676.9	648.9	28.1	24.9	16.2	16.4	3.0	-6.2	-8.8	-7.8	-9.3	-9.2	-8.2	-8.7	-5.9
in other currencies	169.6	-11.6	69.3	68.3	1.0	193.6	74.0	80.7	-7.2	203.5	81.8	73.0	8.4	10.7	18.9	11.6	10.3	1.0	1.5	1.0	0.4	0.4	1.6	-3.8	7.3
Long-term <sup>2)</sup>	12,703.6	47.3	229.4	178.1	52.2	14,092.0	268.2	247.6	18.4	14,166.5	152.3	107.5	48.3	5.8	10.1	10.6	10.8	8.0	6.3	7.2	7.1	5.9	5.0	4.8	4.7
of which in euro	11,488.5	43.5	204.6	156.0	48.5	12,552.2	240.9	204.3	36.0	12,592.1	127.1	87.6	40.2	6.1	11.2	11.8	11.6	8.3	6.3	7.3	7.1	5.7	5.0	5.0	4.9
in other currencies	1,215.1	3.9	24.8	22.1	3.7	1,539.8	27.3	43.3	-17.6	1,574.4	25.3	19.9	8.1	2.9	0.5	0.6	3.4	6.0	6.7	5.8	7.1	7.7	5.1	3.0	3.3
of which fixed rate in euro	8,404.6	37.5	153.3	99.7	53.6	9,274.3	153.0	157.1	-4.1	9,326.2	91.8	65.2	26.6	3.1	9.5	10.5	12.2	11.2	9.7	10.5	10.7	9.3	8.0	7.7	7.5
in other currencies	7,570.9	35.4	137.8	87.4	50.4	8,270.0	134.5	139.3	-4.8	8,296.7	77.3	52.1	25.3	3.0	10.1	11.2	12.8	11.4	9.9	10.7	10.9	9.5	8.3	8.1	7.9
of which variable rate in euro	3,750.9	-1.7	63.0	65.9	-2.9	4,369.9	104.1	73.1	31.0	4,391.9	48.0	31.0	17.1	12.7	12.0	11.3	7.4	1.2	-1.0	-0.2	-0.7	-1.3	-1.5	-1.3	-0.9
in other currencies	3,443.9	-3.9	56.1	57.7	-1.7	3,891.2	97.7	50.9	46.7	3,905.3	40.4	26.1	14.3	14.3	14.4	13.6	9.0	1.7	-1.0	0.1	-0.5	-1.7	-1.7	-1.0	-0.6
	305.8	2.1	6.9	8.1	-1.2	477.3	6.4	22.1	-15.8	485.1	7.6	4.9	2.7	-0.1	-9.2	-9.6	-7.8	-4.2	-1.3	-4.2	-3.3	1.2	0.5	-3.8	-3.9

Source: ECB securities issues statistics.

1) "Short-term" means securities with an original maturity of one year or less (in exceptional cases two years or less). Securities with a longer original maturity, or with optional maturity dates, the latest of which is more than one year away, or with indefinite maturity dates, are classified as long-term.

2) The residual difference between total long-term debt securities and fixed and variable rate long-term debt securities consists of zero coupon bonds and revaluation effects.

3) As a full breakdown of net issues into gross issues and redemptions may not always be available, the difference between aggregated gross issues and redemptions may deviate from the aggregated net issues.

4) Monthly averages of the transactions during this period.

5) As of the reference period December 2009 a euro area country extended the coverage of debt securities issued to include also the non-MFI corporations as well as the short-term debt securities issued by the Government sector. This leads to higher levels of outstanding amounts of around EUR 800 billion, mainly for the long-term (variable rate) debt securities.

6) Annual growth rates are based on financial transactions that occur when an institutional unit incurs or redeems liabilities. The annual growth rates therefore exclude the impact of reclassifications, revaluations, exchange rate variations and any other changes which do not arise from transactions.

Table 2

Debt securities issued by euro area residents in all currencies, by issuing sector <sup>1)</sup> and maturity <sup>2)</sup>

(EUR billions; nominal values)

	Amounts outstanding	Net issues	Gross issues	Redemptions	Net issues <sup>3)</sup>	Amounts outstanding <sup>5)</sup>	Gross issues	Redemptions	Net issues <sup>3)</sup>	Amounts outstanding <sup>5)</sup>	Gross issues	Redemptions	Net issues <sup>3)</sup>	Annual growth rates of outstanding amounts <sup>6)</sup>																						
														Aug. 2009		Sep. 2009 - Aug. 2010 <sup>4)</sup>			July 2010			Aug. 2010			2008	2009	2009 Q3	2009 Q4	2010 Q1	2010 Q2	2010 Mar.	2010 Apr.	2010 May	2010 June	2010 July	2010 Aug.
														Total	14,354.2	19.9	995.1	950.5	45.8	15,690.2	1,068.5	1,044.2	22.9	15,802.6	911.0	829.4	84.8	7.6	10.9	11.2	9.9	6.5	4.7	5.5	5.2	4.2
MFIs	5,445.2	-9.0	636.3	637.6	-1.3	5,427.6	654.9	662.3	-7.3	5,464.0	610.4	586.5	23.8	7.7	4.6	4.0	2.9	1.6	0.5	1.5	1.3	-0.2	-0.4	-0.9	-0.3											
Short-term	752.3	-30.9	547.4	547.7	-0.3	730.7	565.6	566.6	-0.9	756.6	547.7	522.5	25.2	24.6	2.6	-0.4	-8.3	-11.2	-9.7	-11.1	-9.2	-10.3	-8.1	-7.6	-0.5											
Long-term	4,692.9	21.9	88.9	89.8	-1.0	4,696.9	89.3	95.7	-6.4	4,707.4	62.7	64.0	-1.3	4.9	7.1	7.3	9.1	9.8	7.3	8.9	6.1	4.3	3.1	2.6												
of which																																				
Fixed rate	2,502.5	14.5	50.0	44.5	5.5	2,641.0	45.2	56.4	-11.3	2,651.8	35.8	33.5	2.3	4.9	7.1	7.3	9.1	9.8	7.3	8.9	6.1	4.3	3.1	2.6												
Variable rate	1,767.8	3.0	31.4	37.0	-5.6	1,772.2	36.9	28.6	8.2	1,773.6	19.9	21.8	-1.9	5.4	1.8	0.9	-1.7	-3.8	-4.2	-3.8	-4.4	-4.4	-3.6	-3.5	-3.8											
Non-MFI corporations of which	3,170.5	-7.9	135.2	126.4	10.0	4,063.9	167.5	152.7	13.4	4,103.7	125.9	100.7	28.4	18.1	22.1	22.3	18.6	9.3	5.6	7.1	6.3	5.1	3.7	2.4	3.4											
Financial corporations other than MFIs	2,396.9	-6.0	60.5	58.1	3.3	3,217.4	98.1	86.3	9.9	3,255.3	65.3	38.8	30.2	23.6	26.2	25.7	19.6	7.7	3.0	4.6	3.6	2.5	1.4	0.3	1.5											
Short-term	54.1	-4.4	25.6	25.5	0.4	85.5	29.7	33.2	-3.1	92.6	31.6	24.8	6.9	81.3	-22.6	-37.4	-40.0	-25.7	-19.2	-26.6	-23.5	-14.2	-12.3	-8.4	7.1											
Long-term	2,342.8	-1.6	34.9	32.6	3.0	3,131.9	68.4	53.1	13.0	3,162.7	33.6	14.0	23.3	21.7	28.4	28.9	22.5	8.8	3.7	5.6	4.4	3.0	1.7	0.6	1.4											
of which																																				
Fixed rate	888.1	-0.6	11.1	8.2	2.9	1,074.3	13.5	8.9	4.7	1,088.4	9.4	6.0	3.4	6.1	18.1	20.9	20.8	13.6	7.4	9.9	8.2	6.7	4.8	3.2	3.6											
Variable rate	1,413.1	-4.9	22.0	22.9	-0.9	1,988.1	53.7	38.6	15.1	2,005.4	22.9	6.5	16.3	33.3	35.8	35.3	23.9	5.9	0.4	2.3	1.0	-0.3	-1.0	-1.6	-0.5											
Non-financial corporations	773.6	-1.9	74.7	68.2	6.7	846.5	69.5	66.4	3.5	848.4	60.6	61.9	-1.8	6.5	12.3	13.8	16.5	14.8	15.1	16.2	14.9	12.4	10.2	10.3												
Short-term	86.0	-1.3	62.3	63.2	-0.9	77.5	63.0	59.0	4.5	75.3	56.6	58.4	-2.2	15.5	-20.2	-27.6	-34.2	-32.0	-17.0	-24.2	-19.4	-11.1	-15.9	-10.8	-12.1											
Long-term	687.6	-0.6	12.3	5.0	7.5	769.0	6.4	7.4	-1.0	773.1	4.0	3.6	0.4	4.7	19.0	22.5	27.1	23.4	19.9	22.8	21.7	18.7	16.1	12.9	13.1											
of which																																				
Fixed rate	552.7	-0.5	11.2	3.5	7.6	651.5	6.2	4.8	1.4	656.7	3.6	1.8	1.8	4.8	25.1	29.4	35.4	29.1	23.4	27.2	25.8	21.4	19.2	16.1	16.5											
Variable rate	124.5	-0.1	0.9	1.1	-0.2	107.8	0.3	1.5	-1.3	107.9	0.4	0.6	-0.2	7.0	-2.0	-3.3	-4.0	-2.2	-0.5	0.0	-0.4	-0.3	-1.3	-2.0	-2.1											
General government of which	5,738.5	36.8	223.7	186.5	37.1	6,198.7	246.0	229.2	16.8	6,234.9	174.7	142.1	32.6	3.2	12.0	13.5	12.7	9.9	8.3	8.7	8.6	8.1	7.6	7.9	7.7											
Central government	5,383.9	35.9	201.8	169.4	32.5	5,772.6	217.3	208.7	8.6	5,806.4	153.4	122.9	30.4	3.3	12.2	13.7	12.9	9.9	8.1	8.5	8.4	8.0	7.2	7.4	7.2											
Short-term	742.7	10.4	116.4	123.3	-6.8	674.4	118.9	124.3	-5.4	680.8	106.5	100.6	5.9	15.5	57.9	67.9	36.9	12.7	-3.4	4.0	-3.8	-5.5	-5.3	-10.3	-10.8											
Long-term	4,641.2	25.5	85.4	46.1	39.3	5,098.2	98.4	84.3	14.1	5,125.6	46.8	22.3	24.5	2.1	7.5	8.2	9.9	9.5	9.9	9.2	10.4	10.1	9.1	10.2	10.2											
of which																																				
Fixed rate	4,201.0	24.1	76.5	40.5	36.0	4,624.0	85.5	82.3	3.2	4,644.5	40.2	22.2	18.0	1.5	8.1	9.0	10.3	9.6	10.2	9.4	10.7	10.5	9.5	10.5	10.3											
Variable rate	368.0	-1.8	5.4	3.4	2.0	391.0	10.1	2.0	8.1	393.8	2.6	0.1	2.5	7.6	0.1	-1.6	2.0	4.6	5.5	3.5	7.6	6.1	2.0	5.4	6.6											
Other general government	354.7	0.9	21.8	17.2	4.7	426.0	28.7	20.5	8.2	428.5	21.4	19.2	2.2	2.5	8.9	9.6	10.5	10.5	11.4	11.8	11.2	10.4	13.7	15.2	15.5											
Short-term	15.5	-1.3	13.9	12.6	1.3	30.1	23.0	13.5	9.5	30.7	16.2	15.6	0.6	17.6	36.6	41.1	6.4	-17.1	21.8	-5.6	13.8	43.1	30.7	78.7	97.2											
Long-term	339.2	2.1	7.9	4.5	3.4	395.9	5.8	7.0	-1.3	397.8	5.2	3.7	1.5	1.9	7.8	8.4	10.8	12.2	10.9	12.8	11.0	8.9	12.9	12.1	11.8											
of which																																				
Fixed rate	260.4	0.1	4.7	3.1	1.5	283.4	2.7	4.7	-2.1	284.8	2.8	1.6	1.2	1.4	4.3	4.0	6.8	8.3	7.5	9.7	8.0	5.9	7.6	6.7	7.1											
Variable rate	77.4	2.0	3.3	1.4	1.9	110.8	3.1	2.3	0.8	111.2	2.4	2.0	0.4	3.2	20.7	25.2	26.4	26.9	23.4	24.6	22.2	20.2	30.9	30.0	27.0											

Source: ECB securities issues statistics.

1) Corresponding ESA 95 sector codes: MFIs (including Eurosystem) comprises the ECB and the national central banks of the euro area (S.121) and other monetary financial institutions (S.122); financial corporations other than MFIs comprises other financial intermediaries (S.123), financial auxiliaries (S.124) and insurance corporations and pension funds (S.125); non-financial corporations (S.11); central government (S.1311); other general government comprises state government (S.1312), local government (S.1313) and social security funds (S.1314).

2) The residual difference between total long-term debt securities and fixed and variable rate long-term debt securities consists of zero coupon bonds and revaluation effects.

3) As a full breakdown of net issues into gross issues and redemptions may not always be available, the difference between aggregated gross issues and redemptions may deviate from the aggregated net issues.

4) Monthly averages of the transactions during this period.

5) As of the reference period December 2009 a euro area country extended the coverage of debt securities issued to include also the non-MFI corporations as well as the short-term debt securities issued by the Government sector. This leads to higher levels of outstanding amounts of around EUR 800 billion, mainly for the financial corporations other than MFIs sector.

6) Annual growth rates are based on financial transactions that occur when an institutional unit incurs or redeems liabilities. The annual growth rates therefore exclude the impact of reclassifications, revaluations, exchange rate variations and any other changes which do not arise from transactions.

**Table 3**
**Debt securities issued by euro area residents in all currencies, by issuing sector <sup>1)</sup> and maturity, seasonally adjusted**
*(EUR billions; nominal values)*

	Amounts outstanding <sup>2)</sup>	Net issues					Three-month annualised growth rates of outstanding amounts <sup>3)</sup>											
	Aug. 2010	Aug. 2009	May 2010	June 2010	July 2010	Aug. 2010	2009 Sep.	2009 Oct.	2009 Nov.	2009 Dec.	2010 Jan.	2010 Feb.	2010 Mar.	2010 Apr.	2010 May	2010 June	2010 July	2010 Aug.
Total	15,822.4	71.3	-18.2	8.8	55.5	146.4	8.3	5.9	4.9	1.5	2.8	1.3	3.7	3.4	3.3	1.0	1.2	5.5
Short-term	1,639.7	-29.6	-2.6	0.3	-5.7	36.9	1.0	-13.4	-10.4	-8.1	-6.8	-9.0	-18.2	-10.2	-5.3	-1.8	-2.0	8.1
Long-term	14,182.7	100.9	-15.6	8.5	61.3	109.5	9.3	8.7	7.0	2.9	4.0	2.6	6.7	5.1	4.3	1.4	1.6	5.2
MFIs	5,453.4	0.3	-49.3	-3.0	-14.4	33.3	2.2	-3.1	-2.5	-2.3	4.4	0.0	1.6	0.1	0.1	-3.2	-4.8	1.2
Short-term	765.9	-31.6	-5.9	8.1	-3.3	25.9	-14.7	-34.4	-25.3	-12.9	6.4	6.6	-8.0	4.9	4.8	4.1	-0.5	17.9
Long-term	4,687.5	31.9	-43.4	-11.1	-11.0	7.4	5.3	3.1	1.7	-0.5	4.1	-1.0	3.3	-0.6	-0.6	-4.2	-5.4	-1.2
Non-MFI corporations of which	4,127.8	19.9	3.8	-21.9	27.4	62.7	16.0	9.1	6.9	-3.2	-2.2	-3.1	3.3	2.5	3.4	-0.2	0.9	6.9
Financial corporations other than MFIs	3,281.0	16.2	2.5	-13.9	24.5	58.0	13.8	6.6	3.5	-6.9	-4.9	-7.1	0.3	-1.5	1.4	-0.6	1.6	8.8
Short-term	92.2	-4.4	4.9	1.0	-2.4	6.9	-49.3	-2.3	27.7	31.3	-15.9	-42.0	-43.5	-27.6	39.0	54.7	18.5	28.3
Long-term	3,188.8	20.7	-2.4	-14.9	26.9	51.1	16.1	6.8	3.0	-7.6	-4.5	-5.9	1.9	-0.7	0.6	-1.8	1.2	8.3
Non-financial corporations	846.8	3.6	1.3	-8.0	2.9	4.7	23.1	17.1	17.9	10.8	7.9	13.1	15.7	19.2	11.3	1.1	-1.8	-0.2
Short-term	74.4	-0.5	2.7	-6.9	3.2	-1.3	-7.9	-19.2	-34.9	-27.4	-21.9	11.4	-6.4	5.3	7.5	-19.8	-5.3	-23.0
Long-term	772.4	4.1	-1.4	-1.1	-0.3	6.0	27.7	22.3	26.2	16.3	11.7	13.4	18.2	20.6	11.7	3.4	-1.4	2.5
General government of which	6,241.2	51.2	27.3	33.7	42.5	50.4	10.3	13.2	11.2	8.5	4.5	5.6	6.0	7.1	6.0	5.8	7.0	8.5
Central government	5,810.4	49.1	29.0	20.0	33.4	46.5	10.1	13.2	11.1	8.4	4.5	5.2	5.4	6.1	5.7	5.0	5.9	7.2
Short-term	674.7	7.7	-6.2	-1.6	-12.5	3.8	27.8	13.3	6.7	-1.5	-13.3	-18.7	-26.1	-25.6	-22.1	-12.6	-11.2	-5.9
Long-term	5,135.7	41.4	35.3	21.6	45.9	42.7	7.6	13.2	11.8	10.1	7.6	9.5	11.2	11.8	10.4	7.7	8.5	9.1
Other general government	430.8	2.1	-1.8	13.7	9.1	3.9	12.3	13.3	11.9	9.4	4.0	11.2	15.3	22.5	11.3	18.2	22.3	29.1
Short-term	32.5	-0.8	1.9	-0.4	9.3	1.6	75.5	37.3	63.6	-37.7	-69.7	-32.3	24.1	346.7	191.9	116.1	461.2	378.8
Long-term	398.3	2.8	-3.7	14.1	-0.2	2.2	9.7	12.2	9.7	12.7	10.1	14.0	14.9	15.5	5.9	14.5	10.9	17.9

*Source: ECB securities issues statistics.*

1) Corresponding ESA 95 sector codes: MFIs (including Eurosystem) comprises the ECB and the national central banks of the euro area (S.121) and other monetary financial institutions (S.122); financial corporations other than MFIs comprises other financial intermediaries (S.123), financial auxiliaries (S.124) and insurance corporations and pension funds (S.125); non-financial corporations (S.11); central government (S.1311); other general government comprises state government (S.1312), local government (S.1313) and social security funds (S.1314).

2) As of the reference period December 2009 a euro area country extended the coverage of debt securities issued to include also the non-MFI corporations as well as the short-term debt securities issued by the Government sector. This leads to higher levels of outstanding amounts (not seasonally adjusted) of around EUR 800 billion, mainly for the financial corporations other than MFIs sector.

3) Three-month annualised growth rates are based on financial transactions that occur when an institutional unit incurs or redeems liabilities. The three-month annualised growth rates therefore exclude the impact of reclassifications, revaluations, exchange rate variations and any other changes which do not arise from transactions. The rates are annualised to allow direct comparisons with annual rates (please note that the non-adjusted rates presented in Table 2 are almost identical to seasonally adjusted annual rates).



**Table 4**
**Quoted shares issued by euro area residents, by issuing sector <sup>1)</sup>**
*(EUR billions; market values)*

	Amounts outstanding	Net issues	Gross issues	Redemptions	Net issues	Amounts outstanding <sup>3)</sup>	Gross issues	Redemptions	Net issues	Annual percentage change in market capitalisation <sup>4)</sup>	Amounts outstanding <sup>3)</sup>	Gross issues	Redemptions	Net issues	Annual percentage change in market capitalisation <sup>4)</sup>	Annual growth rates of outstanding amounts <sup>5)</sup>																							
																Aug. 2009			Sep. 2009 - Aug. 2010 <sup>2)</sup>			July 2010			Aug. 2010			2008	2009	2009 Q3	2009 Q4	2010 Q1	2010 Q2	2010 Mar.	2010 Apr.	2010 May	2010 June	2010 July	2010 Aug.
																Total	4,044.3	0.7	6.4	0.4	6.0	4,255.1	3.6	0.8	2.7	10.6	4,119.4	1.7	1.2	0.6	1.9	0.9	2.1	2.7	2.7	2.9	2.5	2.8	2.7
MFIs	573.3	0.0	2.3	0.0	2.3	523.9	0.7	0.0	0.7	2.7	483.2	0.0	0.0	0.0	-15.7	2.5	8.5	9.3	8.8	8.2	6.6	7.4	7.0	6.2	5.6	5.1	5.1												
Non-MFI corporations of which	3,471.0	0.7	4.2	0.4	3.8	3,731.2	2.9	0.8	2.1	11.9	3,636.2	1.7	1.2	0.6	4.8	0.7	1.3	1.9	2.0	2.2	1.9	2.1	2.0	1.8	1.3	1.2	1.2												
Financial corporations other than MFIs	321.7	1.3	1.1	0.0	1.1	332.2	0.5	0.0	0.4	10.3	308.3	0.0	0.0	0.0	-4.2	2.6	3.1	3.9	2.7	5.4	5.2	5.4	5.4	5.3	4.4	4.5	4.1												
Non-financial corporations	3,149.3	-0.6	3.1	0.4	2.7	3,399.0	2.4	0.8	1.6	12.0	3,327.9	1.7	1.2	0.6	5.7	0.4	1.1	1.6	1.9	1.9	1.5	1.8	1.7	1.5	1.0	0.9	1.0												

Source: ECB securities issues statistics.

1) Corresponding ESA 95 sector codes: MFIs refers to other monetary financial institutions (S.122); financial corporations other than MFIs comprises other financial intermediaries (S.123), financial auxiliaries (S.124) and insurance corporations and pension funds (S.125); non-financial corporations (S.11).

2) Monthly averages of the transactions during this period.

3) As of the reference period December 2009 a euro area country extended the coverage of quoted shares, including also international listings.

This leads to higher levels of outstanding amounts of around EUR 120 billion, mainly in the non-financial corporations sector.

4) Percentage change between the amount outstanding at the end of the month and the amount outstanding 12 months earlier.

5) Annual growth rates are based on transactions that occur during the period and therefore exclude reclassifications and any other changes which do not arise from transactions.